



ANNUAL REPORT

2024





CONTENTS

MESSAGE FROM OUR CHAIRLADY.....	1
VISION, MISSION & VALUES.....	2
VISION & MISSION.....	3
OUR VALUES & FOCUS.....	4
CARING FOR CHILDREN IN OUR COMMUNITY.....	5
OUR APPROACH.....	6
HOLISTIC CARE OFFERINGS AT ANGELS' CARE.....	7
EXPANSION : ANGELS' CARE COMMUNITY HALL.....	8
EXPANSION OPPORTUNITIES.....	9
AFTER-SCHOOL AND NOURISHMENT.....	10
2023/2024 CAPITAL IMPROVEMENTS.....	11
ECD CENTRE PRESCHOOL.....	12
ECD CENTRE PRE-SCHOOL.....	13
EXAMPLES OF OUR IMPACT.....	14
BRIDGING CLASS.....	15
YOUTH DEVELOPMENT AFTER-SCHOOL PROGRAM.....	16
HEALTH SERVICES & NUTRITIONAL PROGRAMS.....	17 - 23
COMMUNITY OUTREACH.....	24 - 26
STORIES OF HOPE.....	27 - 28
FINANCIAL ACCOUNTABILITY.....	29
DONORS & SPONSORS.....	30
HOW TO HELP.....	31

MESSAGE FROM OUR CHAIRLADY

Reflecting on Angels' Care remarkable journey in 2024 fills us with immense joy and profound gratitude. This past year truly showcased the power of our collective vision: transforming the lives of vulnerable children through dedicated healing and nurturing care.

A significant milestone was the realisation of our long-held dream – the Early Childhood Development (ECD) Centre. This achievement was made possible in large part through the extraordinary generosity and unwavering efforts of CUSP (Creating Unity, Shaping Purpose) Foundation Inc., Nashville, USA, and their dedicated supporters. Our vibrant ECD centre now provides a nurturing space where 160 young children thrive through learning and laughter. This exceptional facility, recognised by the prestigious International Union of Architects (UIA 2030) Award in partnership with UN Habitat, delivers crucial educational resources within a sustainable and supportive environment.

Further amplifying our impact, the restored Old Agricultural Hall has become a magnificent community hub, thanks to the continued generosity of CUSP Inc. and their supporters in Nashville, USA. This revitalised space houses a well-equipped kitchen that supports our expanded nutritional programs, including vital after-school meals and our weekend feeding program. The Hall also provides a dedicated after-school tutoring centre for high school students and engaging play-based learning areas, complete with outdoor equipment, for younger children. The Hall Café, a dream brought to life by Cal Turner, Jr., Nashville, USA, with its meaningful "Drink great coffee for a change" motto, seamlessly connects the community with Angels' Care, with all proceeds directly supporting our vital programs.

Our unwavering commitment to holistic care remained central to our work. Our dedicated healthcare team provided essential medical care to 418 children. Simultaneously, our Crisis Centre offered compassionate and crucial support to 52 child victims of sexual assault and 110 children navigating the complexities of trauma, neglect, and grief. We provided safe shelter for 37 children in our emergency overnight facility, and our counselling services offered solace and guidance to 199 children and their families. Throughout the year, we proudly served an impressive 88,020 nutritious meals to the children in our care.

Our community outreach programs played a vital role in strengthening families and fostering positive change within the wider community. We provided enriching after-school programs for 160 children, offered crucial support to families facing hardship, and reached 5,621 community members through impactful educational outreach initiatives. Empowering children with knowledge about their fundamental rights, fostering open communication, and actively addressing harmful societal norms remain critical pillars of our work. These essential efforts, coupled with the tireless dedication of our compassionate social workers, nurses, and caregivers, empower children to recognise and report abuse, creating a safer environment for all.

These efforts, along with the dedication of our social workers, nurses, and caregivers, empower children to identify and report abuse.

At Angels' Care, we firmly believe that our holistic approach is the key to unlocking a brighter future for the children we serve and the community we are a part of. We are committed to nurturing the whole child – mind, body, and spirit – thereby strengthening the very fabric of our community. We witness first-hand the transformative power of education in unlocking potential, the healing impact of healthcare, and the strong connections forged through our outreach initiatives.

We extend our deepest gratitude to our invaluable local donors, dedicated supporters, and selfless volunteers here in South Africa, as well as our cherished international partners, who all contribute significantly to our efforts, whether financially, through their precious time, or with vital resources.

Carolyn Hancock



**CAROLYN
HANCOCK**

OUR
**VISION,
MISSION,
& VALUES**





OUR VISION & MISSION

OUR VISION

Transforming children's lives, by inspiring hope, enabling healing, and nurturing potential.

OUR MISSION

Angels' Care aims to provide for the optimal growth and development (mentally, physically and spiritually) of the children we serve in a safe and loving environment.

OUR GOALS

- Provide an environment where children are given care, guidance and protection from people and things that seek to deny these God given rights intentionally, unintentionally or through apathy.
- Provide for the basic needs of the children we serve, and their caregivers, through access to healthcare and other human services as well as excellent educational resources.
- Seek long-term, sustainable solutions that deliver the best for the children we serve. This will require us to be in partnership with others not only locally but also nationally and internationally.

OUR VALUES & FOCUS AREAS

FOCUS AREAS

- Encouraging Hope
- Educating Children
- Empowering Communities
- Enriching Lives

VALUES



FAITH



INTEGRITY



PARTNERSHIP



DISCIPLINE



DIVERSITY



RESPECT



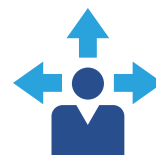
COURAGE



ACCOUNTABILITY



COMPASSION



IMPACT



CARING FOR CHILDREN
**IN OUR
COMMUNITY**



CARING FOR CHILDREN IN OUR COMMUNITY

OUR APPROACH

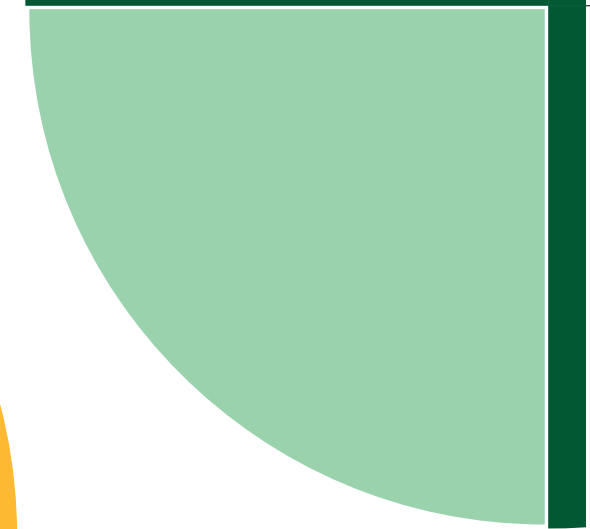
Angels' Care Centre is a registered Non-Profit, Public Benefit Organisation (PBO) dedicated to breaking the cycle of poverty in the Umngeni Municipality by providing hope, love, safety, and care to children and their families.

Many of the children we serve are orphans, members of child-headed households, or living with HIV/AIDS. Their caregivers often face unemployment and poverty, leading to harsh living conditions with limited access to necessities like running water and electricity.

Recognising the urgent need for support, Angels' Care Centre focuses on:

- **Nutritional Programs:** Providing nutritious meals to address food insecurity.
- **Quality Early Childhood Education:** Ensuring children have a strong educational foundation.
- **After-School Programs:** Offering homework assistance, life skills development, and extracurricular activities.
- **General Healthcare Assistance:** Supporting children's physical and mental well-being.
- **Crisis Care:** Offering support and protection to victims of sexual assault and child abuse.

Angels' Care Centre empowers children holistically, fostering academic, emotional, physical, and spiritual growth to ensure they thrive. By investing in vulnerable children and their families, we strive to build a brighter future and a stronger, more equitable community for generations to come.







EXPANSION

ANGELS' CARE COMMUNITY HALL

EXCITING GROWTH OPPORTUNITIES

EXPANSION

Enhancing our commitment to providing quality and impactful facilities and programs to the children we serve, Angels' Care Centre in Howick, KwaZulu-Natal has significantly upgraded its facilities.

In 2023, we completed a state-of-the-art Early Childhood Development Centre and renovated our Health Care Centre, including an emergency overnight facility.

During 2024, we transformed the Old Agricultural Hall into the vibrant Angels' Care Centre Community Hall. The Hall now provides dedicated after-school facilities for both high school and primary school students, a central kitchen for our nutritional

programs, and a café open to the public, enhancing its role as a community gathering point.

We have embraced sustainability by installing solar panels and battery storage at all our facilities, ensuring reliable power and significantly reducing our environmental impact.

We have embraced sustainability by installing solar panels and battery storage at all our facilities

ANGELS' CARE CENTRE COMMUNITY HALL

The renovation of the Old Agricultural Hall has provided a safe, stimulating, and nurturing environment for children to learn, grow, thrive, receive the nourishment they need, and connect with the wider community. These new facilities have expanded our capacity to offer comprehensive after-school programming that addresses academic needs, fosters creativity, promotes essential life skills, empowers children, ensures their nutritional needs are met, and strengthens community ties.



AFTER-SCHOOL AND NOURISHMENT

For many of the children we support, safety after school is a major concern. Our after-school programme provides a secure, dynamic space for 200 students, offering learning, tutoring, and sports activities with facilities designed to engage, assist, and inspire them.

AFTER-SCHOOL EDUCATIONAL AND SPORTING PROGRAMS AT OUR NEW COMMUNITY HALL

The Angels' Care After-School Program provides an essential support system for 160 children from Thembelihle and other local government schools, spanning from Grade 1 to Matric.

It is far more than just a place for supervision, it is a nurturing environment that fosters holistic development and provides crucial resources and opportunities for children to succeed.

NOURISHING BODIES AND MINDS

Beyond the enriching educational and recreational spaces, the renovated hall now houses a fully functional commercial kitchen to cater for the nutritional needs of the children we serve. This facility allows us to efficiently and effectively deliver our vital nutritional programs, reaching an impressive 160 children every weekday and an additional 350 children on Saturdays.

These programs ensure that children have access to nutritious meals, supporting their physical health and overall well-being, which are crucial for their development and academic success.



A WELCOMING SPACE FOR THE COMMUNITY: THE HALL CAFÉ

The renovation also includes a brand-new coffee shop, designed to welcome members of the wider community into a vibrant commercial space. This offers a unique opportunity to highlight the incredible work Angels' Care does for the community.

Visitors can enjoy delicious food and coffee while learning more about our programs and impact. Furthermore, a percentage of the profits from the coffee shop go directly to support the Centre, creating a sustainable model of community engagement.

These programs ensure that children have access to nutritious meals, supporting their physical health and overall well-being



2023/2024

CAPITAL IMPROVEMENTS

ECD, HEALTH CARE CENTRE AND AGRICULTURAL HALL RENOVATIONS: DONORS AND CONTRIBUTORS

CUSP Foundation, Inc. (Creating Unity, Shaping Purpose) - Brentwood, TN, USA - Construction, Landscaping, Furnishings

- BHG Financial, Inc - Platinum Level Gift
- CUSP Board of Directors - Gold Level Gift
- Cal Turner Jr. Matching Gift - Gold Level Gift
- Cal Turner Jr. - Hall Café Sponsor
- Various Individual and Corporate Gifts

EARLY CHILDHOOD DEVELOPMENT CENTRE (ECD)

- SAMCT (South African Muslim Charitable Trust) - Land Purchase
- Freundeskreis des Katholischen Forum, Dortmund, Germany - Solar
- The Maddy Mouse House - Library
- Laurence and Carolyn Hancock - Project Management
- FGG Architects, Durban
- Neroholt Architecture and Urban Design, Australia
- Urban Play, Australia
- Sivist Engineering, Durban
- MLC Construction Cost Consultants, Durban
- Warr Builders, Howick
- Corobrik, South Africa
- Build It, Howick
- Plascon, South Africa

AGRICULTURAL HALL RENOVATIONS:

- Bobby and Sophie Castro - Building Purchase
- Alice Anne and Lambros Desmosthenous - Building Purchase
- Victor Daitz Foundation - Solar





EARLY CHILDHOOD
DEVELOPMENT CENTRE
PRESCHOOL

EARLY CHILDHOOD DEVELOPMENT CENTRE

PRESCHOOL

2024 was a pivotal year for Angels' Care Centre Early Childhood Development Centre (Preschool). We transitioned into our stunning new, state-of-the-art campus in Morling Street, a space designed to inspire learning and growth. This move has allowed us to enhance our programs and further our mission of providing excellent Early Childhood Development (ECD) to the children of our community, especially those facing challenging circumstances.

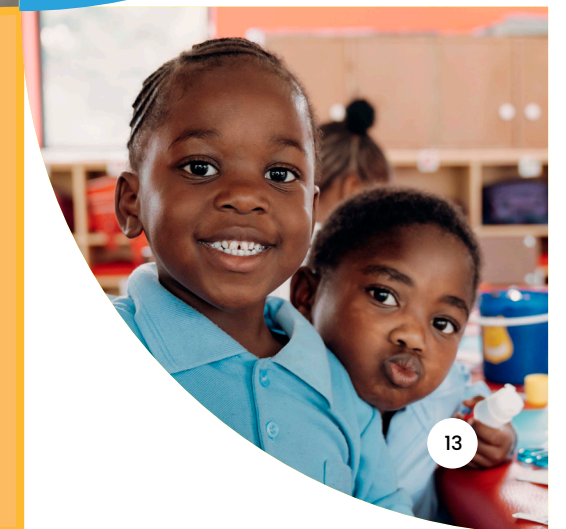
Our new facility boasts modern classrooms, a purpose-built playground, and quality equipment. This environment has fostered new thinking and methodologies amongst our dedicated teaching team, strengthening our collaborative approach to focus on the cognitive and emotional development of the 150 children we educate.

We welcomed Dave Cato as the new principal for both Angels' Care Preschool and Thembelihle Primary School. His wealth of experience is already shaping a bright future for our schools.

Nurturing Development: A Holistic Approach

Angels' Care Centre ECD provides a nurturing haven where children learn, play, and grow. Our play-based curriculum, enriched with themes, literacy, and numeracy, empowers children for future success. With compassionate teachers and individualised support, we address each child's unique needs, helping them overcome challenges and flourish in a safe and stimulating environment.

Our collaborative approach focuses on the cognitive and emotional development of the 150 children we educate.



EXAMPLES OF OUR IMPACT

Social-Emotional Development

- **Growing confidence** - A previously quiet student has emerged as a leader, demonstrating empathy and resilience.
- **Enhanced communication** - Students are now confidently sharing and engaging with peers, showing improved social skills.

Physical Development

- **Overcoming obstacles** - A student facing physical challenges has made significant progress, highlighting the importance of celebrating individual abilities.

Speech and Language Development

- **Unlocking communication potential** - A child facing initial speech challenges has made significant progress, enabling them to express themselves more effectively.

Cognitive Development

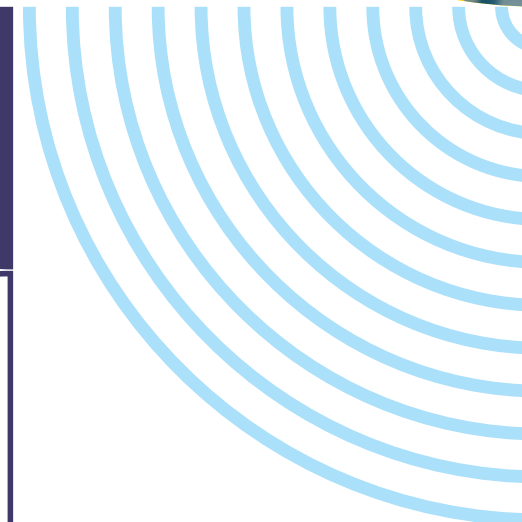
- **Developing a love of learning** - Students are showing enthusiasm for new concepts and demonstrating intrinsic motivation.
- **Improved focus and attention** - Students are completing tasks with greater attention to detail and demonstrating improved executive function.

Creative Development

- **Nurturing creativity** - Students are expressing themselves through art and imaginative play, fostering creativity and problem-solving skills.

Graduation and Transitions: Preparing for the Future

- This year, we celebrated the graduation of 51 Grade R pupils who are now prepared to thrive in Grade 1 at Thembelihle School.



BRIDGING CLASS

With its intimate setting of just 10 students per year, the Angels' Care Centre Bridging Class provides a haven for previously unschooled children, offering a crucial stepping stone towards a brighter future.

The small class size ensures individualised attention and tailored instruction, equipping these vulnerable children with the foundational skills and knowledge necessary for successful integration into formal schooling.

The impact of this vital service resonates in the remarkable achievements of its alumni. One former student, having completed Grade 7 at Thembelihle School, blossomed into a talented musician, becoming an accompanist for both the marimba band and djembe drum squad. Another graduate successfully completed their Grade 12 Matric examinations at Injaloba High School and is now poised to embark on studies in the agricultural sector. These inspiring stories highlight the

transformative power of the Bridging Class, demonstrating its ability to unlock potential, foster growth, and empower children to thrive academically and pursue their ambitions.

Individualised attention and tailored instruction, equipping these vulnerable children with the foundational skills and knowledge



YOUTH DEVELOPMENT

AFTER-SCHOOL PROGRAM

In 2025, we will introduce a revised and comprehensive after-school program, meticulously crafted to equip children with the tools and opportunities they need to thrive.

KEY PROGRAM COMPONENTS

- **Bridging the digital divide** - The IT & Tutoring Room will provide essential technology access and targeted tutoring for high school students. This will enhance academic performance and digital literacy, closing the educational gap and preparing students for a technology-driven future.
- **Cultivating lifelong learners** - Our expanded Reading Corner/Library will ignite a passion for reading, improve literacy and communication skills, and broaden horizons through access to diverse literature.
- **Nurturing creativity and innovation** - The Creative Arts Studio, Games & Strategy Zone, Fantasy Play Area, and Lego Building Centre will foster creativity, problem-solving, and critical thinking while developing fine motor skills.
- **Promoting physical and social well-being** - The Sporting Program, featuring soccer (including the reinstated African Angels team and district league) and netball, will promote physical fitness, teamwork, and discipline. Our Life Skills Workshops will promote emotional intelligence, resilience, and well-being.

FOCUSING ON HOLISTIC DEVELOPMENT

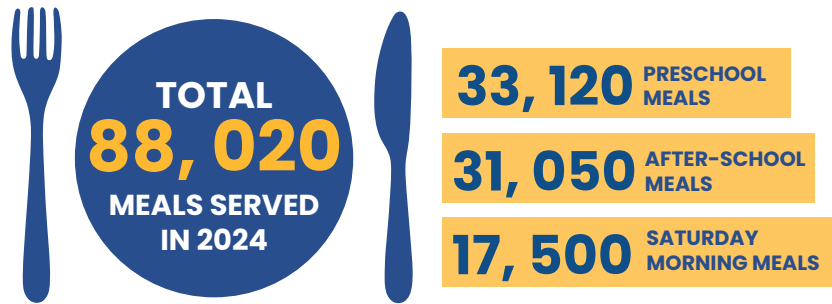
- **Essential life skills development** - Structured activities and workshops led by experts from the Crisis Centre and external service providers will equip children with the skills needed to navigate life's challenges, build resilience, and develop into well-rounded individuals.
- **Safe and supportive environment** - In response to community concerns, we will provide a secure and supervised environment where children can learn, play, and engage with their peers without fear.
- **Enhanced community integration** - Our continued partnership with Hilton College, and other community partners, will foster cross-cultural understanding, broaden perspectives, and create a more inclusive community.
- **Expected Impact** - The safe environment and community partnerships will foster a sense of belonging and promote social integration.



HEALTH SERVICES & NUTRITION
PROGRAMS



OUR NUTRITIONAL PROGRAM



BENEFITS

- Utilises a menu that ensures all children receive a well-balanced diet.
- Operates two fully accredited and well-resourced school kitchens.
- Ensures the optimal growth and development of every child.
- Improves our children's ability to fight chronic diseases such as TB and HIV, which plague the communities in which they reside.
- Increases children's ability to learn and achieve their full potential in the classroom by ensuring they can concentrate on their studies and not be preoccupied by hunger.
- Creates hope for a better future where hunger does not exist, especially for young developing children.



FEEDING PROGRAM OVERVIEW

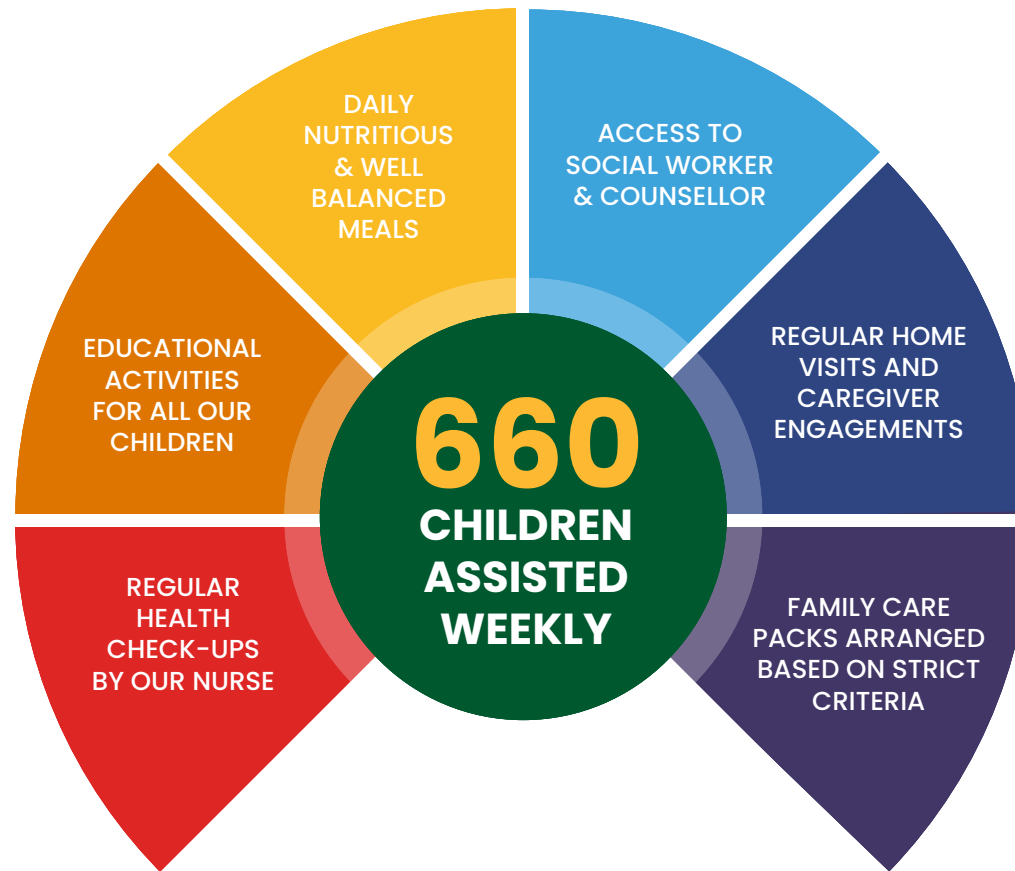
To ensure the physical health and well-being of the 150 children educated at Angels' Care ECD (Preschool), our 10 bridging class learners and the 160 children that attend our After-School Youth Development Program, we aim to ensure that every child receives at least one nutritious meal daily.

- Our 160 school children are each provided with porridge, fruit (snack) and a hot cooked meal every day that they attend school. To the best of our ability, these young children receive a well-balanced diet, and every attempt is made to cover all food groups.
- The 160 children attending our After-School Youth Development Program each receive a package consisting of sandwiches, fruit, and yoghurt and at least two hot meals in a weekly cycle.
- We feed 350 children every Saturday of the year with a package consisting of sandwiches, fruit, and yoghurt. In 2024 this program provided 15,850 meals.
- The Centre provides 10 families a month with food parcels for their households. With approximately 5 members per family, this equates to approximately 8,000 meals annually.
- In total, we fed 660 children a week and served a total of 88,020 meals in 2024.





OUR NUTRITIONAL **PROGRAM**



HEALTH SERVICES

THE NEED FOR CRISIS CARE IN KWAZULU - NATAL

South Africa faces a devastating gender-based violence (GBV) epidemic, with Interpol naming the country the "Rape Capital of the World." This crisis disproportionately affects women and children, with alarming statistics: approximately 3,800 women and children are sexually assaulted daily, and 3 children are raped every minute. A major issue is that only 0.4% of sexual offenders are held accountable for their actions.

It is estimated that a woman born in South Africa has a higher chance of being raped than learning to read. In 2020, more than 600 girls aged between 9 and 10 gave birth in South Africa. According to the World Health Organisation, 12.1 in every 100,000 women are victims of femicide in South Africa annually, five times higher than the global average of 2.6.

This alarming reality necessitates specialised healthcare and crisis intervention services for women and children impacted by GBV in the Howick area of the KZN Midlands. The province of KwaZulu-Natal accounts for the second highest number of GBV incidents annually, based upon crime statistics released by the South African Police Services. The devastating impact of GBV extends far beyond the initial incident, leaving lasting physical and psychological scars on survivors and their families. This violence erodes the fabric of society, undermining the safety and well-being of entire communities.

Angels' Care is uniquely positioned to address these critical needs. Our range of services is tailored to the specific needs of survivors and includes crisis intervention, overnight emergency short-stay facilities, general healthcare, and support for children affected by trauma and grief due to losing loved ones to chronic diseases such as HIV, TB or violence.

12.1 in every 100,000 women are victims of femicide in South Africa annually.

In 2020, more than 600 girls aged between 9 and 10 gave birth in South Africa.

Angels' Care is uniquely positioned to address these critical needs.





SERVICES PROVIDED BY THE HEALTH AND CRISIS CARE CENTRE

We currently offer a range of essential services under one roof, including:

- **24/7 Emergency Response and Assistance** - Immediate support is available for those in crisis through a dedicated hotline and rapid response teams.
- **Crisis Medical Care** - Comprehensive medical treatment is provided by our experienced forensic nurse, including post-exposure prophylaxis (PEP) to prevent HIV transmission. This includes on-site services from a dedicated forensic nurse for sensitive medical examinations and evidence collection for potential legal proceedings.
- **Psychosocial Support** - Our specialist social worker and additional social auxiliary worker offer comprehensive counselling and therapy services, including individual, group, and family therapy, to aid in recovery and healing.
- **Emergency Short-Term Shelter** - Safe, temporary emergency overnight shelter is provided for victims who cannot return to their homes, ensuring a secure and supportive environment where they are cared for by our resident housemother.

Our commitment to the holistic well-being of children is evident in the provision of general healthcare services.

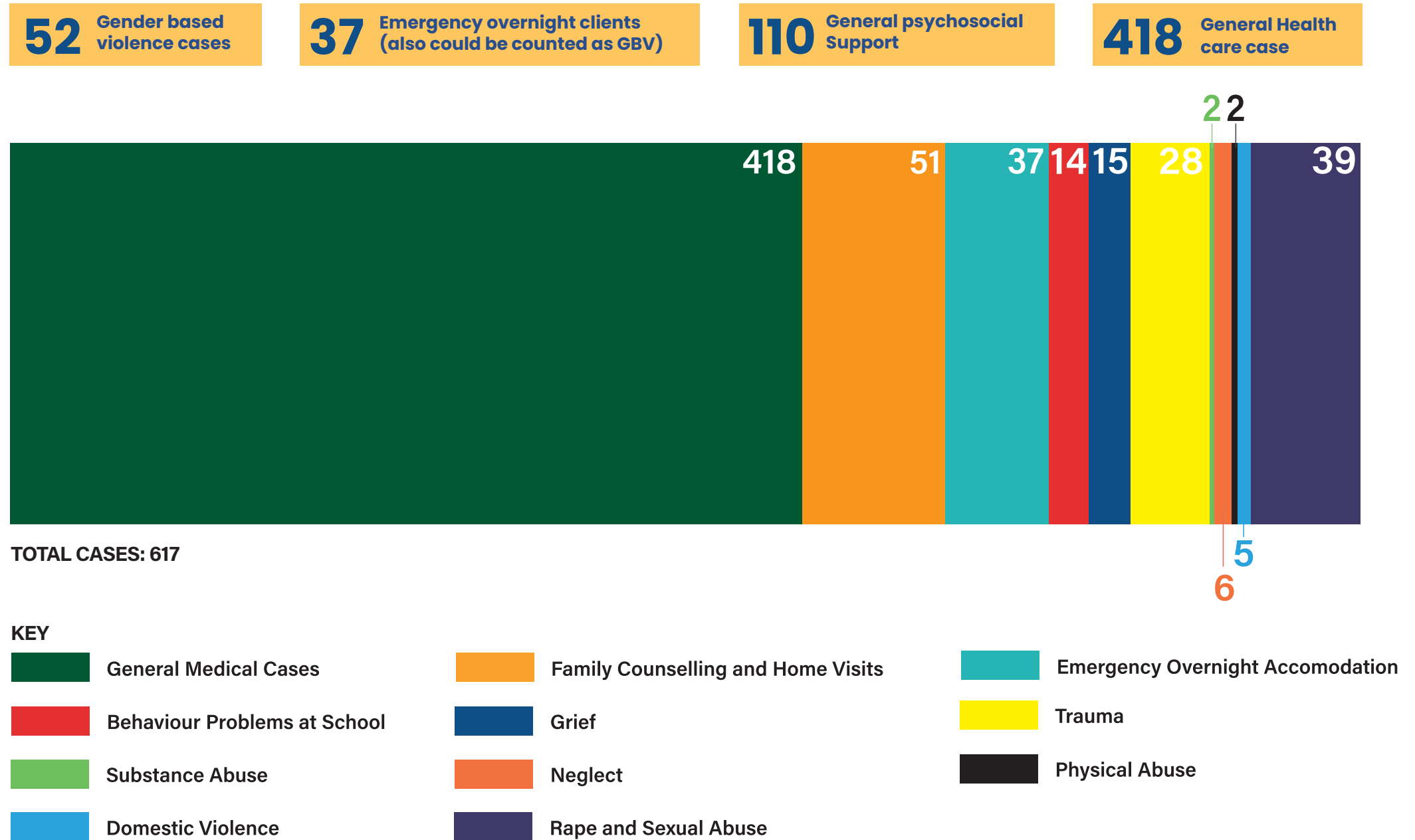
- **Community Outreach and Education** - We raise awareness about GBV through community workshops, school programs, and public campaigns, empowering communities to prevent and respond to violence. Our community caregivers form the crucial link between families living in the communities we serve and the Centre.
- **General Medical Care** - For all children participating in our programs, we prioritise comprehensive health and developmental monitoring. Additionally, the Centre provides on-site treatment for minor ailments by our registered nurse.

2024 GENERAL AND CRISIS HEALTH CARE IMPACT

By providing trauma-informed care, including counselling, therapy, and support groups the Health and Crisis Care Centre enables survivors to heal from the emotional and psychological wounds of abuse and trauma. It further increases the likelihood of successful prosecution of perpetrators.

Our commitment to the holistic well-being of children is evident in the provision of general healthcare services. These services ensure that children receive the necessary care to thrive, reach their developmental milestones, and build a strong foundation for a healthy future.

CRISIS HEALTH CARE IMPACT



CRISIS CARE: JUSTICE PREVAILS IN CHILD SEXUAL ASSAULT CASE - 2024

On March 13, 2023, a 14-year-old girl was referred to Angels' Care Centre by local police, her young life irrevocably altered by a brutal sexual assault. The alleged perpetrator, a man she knew, had tricked his way into her home, held her at knife point, and raped her. The traumatised victim was brought to Angels' Care Centre by her grandmother. The medical examination was conducted at the Centre. A crime kit was used to meticulously collect forensic evidence.

A required legal form was completed by our health care team and submitted to the South African Police. The victim, beyond the immediate physical trauma, received preventative treatment to reduce the risk of HIV infection, and counselling services to begin the long journey of healing. An expert in forensic nursing from Angels' Care Centre provided crucial testimony in court, leading to the perpetrator being found guilty and sentenced to 25 years to life imprisonment.

GENERAL HEALTH CARE: PROMISING PROGRESS FOR A CHILD WITH CEREBRAL PALSY

A 14-year-old student from Thembelihle Primary School, diagnosed with spastic cerebral palsy in 2018, is showing promising signs of improvement after years of living with right-side paralysis and related challenges. The young boy, who has struggled with balance and relied on assistive devices such as a plaster cast splint and a calliper shoe, recently experienced a setback when he fell and broke his splint. Following the fall, the Angels' Care Centre nurse accompanied him to the hospital, advocating for appropriate pain management and further evaluation of his condition. This prompted a series of specialist referrals, including orthopaedics, neurology, and a dedicated Botox clinic. Crucially, during this process, doctors reviewed his medical history and discovered that a recommended corrective operation had been delayed due to previous neglect. Despite this, healthcare professionals are now diligently working to address the situation. The student is currently receiving comprehensive treatment including

haloperidol medication, regular Botox injections to manage nerve issues, and ongoing consultations with orthopaedic and neurological specialists. The culmination of this renewed effort will be corrective surgery. While he will continue to require specialist care in the interim, the successful completion of pre-operative blood tests signals a positive trajectory. This case highlights the importance of consistent care and advocacy for children with chronic conditions. Despite a challenging past, this young student now has a renewed chance at improved mobility and quality of life thanks to the collaborative efforts of Angels' Care Centre healthcare professionals and Thembelihle School.

This case highlights the importance of consistent care and advocacy for children with chronic conditions.



COMMUNITY OUTREACH





COMMUNITY OUTREACH

REACHING OUT AND EDUCATING

This year, our team has made significant strides in community outreach and education, delivering 36 impactful talks reaching 5,621 people in schools, support groups, communities, and clinic attendees. These sessions covered crucial topics such as family planning, gender-based violence, domestic violence, child abuse awareness, pregnancy challenges, bullying, and the services provided by Angels' Care, including essential childcare guidance.

Our commitment to knowledge sharing goes beyond presentations. Each talk concludes with a dynamic Q&A session, empowering participants to address their specific concerns and receive personalised assistance.

ENHANCING ENGAGEMENT AND ACCESSIBILITY

Refining our approach based on past experiences, we have adjusted group sizes and prioritised interactive engagement, ensuring our message resonates deeply with every audience. Recognising the need for readily available information, we created a Health and Crisis Care flyer (available in isiZulu and English).

This flyer is now a standard part of our outreach efforts, ensuring that attendees can easily access support and resources after each talk.

NURTURING TEEN SUPPORT SYSTEMS

Our ongoing support groups for teenagers (both boys and girls) continue to provide a safe space for dialogue and learning. Focusing on vital topics like family planning, teenage pregnancy, human rights, hygiene, and gender-based violence these groups empower young people with knowledge and resources.

We've also provided 259 hygiene packs to young girls to ensure their health and well-being. Looking ahead, we're excited to announce that these vital support groups will be relocating to the Agricultural Hall in 2025, offering an improved and more accessible environment.

ADDRESSING CRITICAL NEEDS

In response to concerns raised by the chaplain and teachers at Thembelihle, we've placed additional emphasis on delivering targeted talks addressing critical issues such as substance abuse and statutory relationships among children. We are committed to continuing our close collaboration with the chaplain and teachers at both Thembelihle and Angels' Care to provide ongoing support and guidance.

emphasis on delivering targeted talks addressing critical issues such as substance abuse and statutory relationships among children.

THE ILOVEBOOBIES PARTNERSHIP: A LIFELINE FOR WOMEN

Our invaluable partnership with ILoveBoobies has continued to provide free breast cancer screenings to women without medical aid. This initiative has had a profound and life-changing impact, reaching women who otherwise would not have access to early detection.

SHOE DONATION DRIVE

We were blessed with a donation of over 160 pairs of shoes, ensuring that every child at Angels' Care Preschool had footwear for the year.

16 DAYS OF ACTIVISM 2024: A COMMUNITY UNITED AGAINST ABUSE

In order to raise awareness around GBV and support survivors, our 16 Days of Activism campaign began with a community event at Khanya Village, Cedara, focused on addressing the abuse of women and children. Participating SAPS representative, Sergeant Mnikathi, highlighted the role of law enforcement in combating gender-based violence.

The event included discussions and a call to action. A subsequent initiative, in partnership with Balgovan Clinic and the Howick Family Violence, Child Protection, and Sexual Offences (FCS) unit, provided support to young mothers. Nappies and hygiene packs were also distributed during the campaign.

FROM OUTDATED HALL TO VIBRANT LIFELINE!

The transformed Angels' Care Centre Community Hall hosted an unforgettable November evening, raising crucial funds for our Health and Crisis Care Centre.

Participating SAPS representative, Sergeant Mnikathi, highlighted the role of law enforcement in combating gender-based violence.

504

BLANKETS
DISTRIBUTED

114

HOME VISITS
CONDUCTED

259

CARE PACKS
DISTRIBUTED

5,621

PEOPLE REACHED
THROUGH 36 TALKS





STORIES OF **HOPE**

STORIES OF HOPE

COMMUNITY ASSISTANCE

Finding Strength in Community: An Impoverished kwaMathandubisi Family

In the harsh kwaMathandubisi informal settlement, a family of eight – a mother battling mental health issues and HIV, and her seven children all without fathers – faced dire circumstances. The eldest daughter, in her twenties, cared for her siblings, including a 6-month-old, relying on neighbours for food. The Angels' Care Centre community caregivers responded by providing emergency food, including them in the Centre's family food parcel program, and worked with police to get the mother hospitalised for three months for much-needed treatment.

DISASTER RELIEF

Assisting Fire Victims

A fire devastated a local family's home, leaving eleven people, including five children, with nothing. Angels' Care Social Outreach Team responded immediately. They coordinated the donation of building materials – wooden planks, iron sheets, and poles – enabling the family to rebuild a four-room house. Understanding the importance of education, Angels' Care provided school uniforms and supplies so the children could return to their studies. Recognising the emotional toll of the fire, the team arranged for social work intervention to help the family cope with their trauma.

They supported the children daily during this time, with the younger ones in the care of a place of safety. Upon the mother's improved health and return, she found employment as a domestic worker. She maintains contact with her children at the care facility, engages with support groups, and continues receiving food parcels. Critically, all the children are now back in school, thanks to uniforms provided by the Angels' Care Centre. This family's transformation showcases the impact of community support, turning hardship into resilience and hope.

When the mother suffered an injury, community caregivers provided ongoing support, and a visiting nurse ensured she received the care needed to recover and return to work. Access to after-school programs and online learning resources, facilitated by Angels' Care, helped the children excel academically. Disaster relief such as this demonstrates the vital role of Angels' Care Centre and their community caregivers in providing comprehensive support and fostering resilience in the face of tragedy.



CHRISTMAS PARTY

Spreading Christmas Cheer

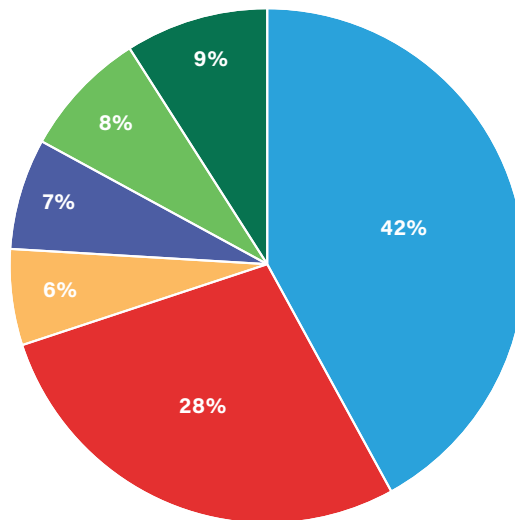
Hilton College organised a very special Christmas morning for our Angels' Care Preschool children. Hilton College, Capitol Caterers, and THIRSTI Water made this event happen. The children were treated to an unforgettable experience with Kimbo the Magic Trick Man, delicious freshly baked doughnuts, and sparkling flavoured water. It was a magical way for the children to celebrate the end of 2024.

OPERATIONAL INCOME AND EXPENDITURE

FINANCIAL ACCOUNTABILITY

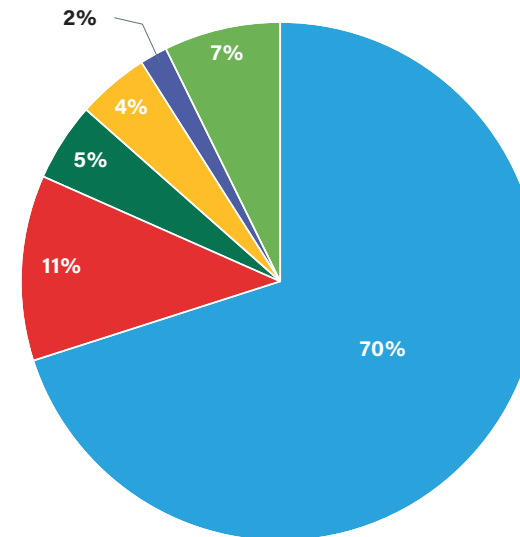
- Audited financials are available on request
- No debt
- Diversified funding base: Individuals, Corporates, Government Grants and Charitable Trusts
- Domestic | International funding virtually equal
- Revenue | Expense ratio 1:1

REVENUES



- GENERAL DONATIONS
- SPONSORSHIP FEES
- SCHOOL FEES
- FOOD SECURITY
- INTEREST
- GOVERNMENT GRANTS

EXPENSES



- SALARIES, BENEFITS
- FOOD COSTS
- SECURITY, UTILITIES
- REPAIRS, MAINT, INS
- SUPPLIES, STATIONERY
- REMAINING EXPENSES

THANK YOU

DONORS & SPONSORS

Sponsors of Children's Fees:

- Brentwood United Methodist Church – Brentwood, Tennessee USA
- Individual sponsors in South Africa and abroad

General Fund Donations, Corporate and Trust Gifts:

- CUSP Foundation, Inc. Brentwood, Tennessee USA
- Brentwood United Methodist Church – Brentwood, Tennessee USA
- Edward F. Fisher Foundation – Atlanta, Georgia USA
- "Get With It" Team – Sports for Lives, South Africa
- DNI Invest, Johannesburg
- Fanaka Foundation, Johannesburg
- W. L. Hancock Gifts Trust, Durban, KZN
- Tim Hancock Charitable Trust, Durban, KZN

- Iqraa Charitable Trust, Durban, KZN
- Santova Logistics, Durban, KZN
- Donovan Coetze, South Africa
- Andermatt PHP Pty Ltd, Midlands, KZN
- "Splash For Spider", Online legacy campaign
- Global Manufacturing Solutions, Pietermaritzburg, KZN
- Bree Probiotic Skin Care, South Africa
- Brokoop Insurance Brokers, Pietermaritzburg, KZN
- Zylem Pty Ltd, Pietermaritzburg, KZN
- Burg Wheelers, Hilton, KZN
- Compendium House, Westville, KZN
- Kelly Jay Jewelry, Hilton, KZN

Key Partnerships and/Donations in Kind:

- Hilton College, Hilton, KZN
- St. Annes College, Hilton, KZN
- Cordwalles Preparatory School, Pietermaritzburg, KZN
- Howick High School, Howick, KZN
- Entembeni Tribe of Hope, Howick, KZN
- Iloveboobies, South Africa
- Maritzburg College, Pietermaritzburg, KZN
- Greendale SPAR, Howick, KZN
- VUKA Fitness, Pietermaritzburg
- Harcourts Ambers, Howick, KZN
- THIRSTI Water, Pietermaritzburg, KZN
- Capital Caterers, KZN Midlands
- Rotary, Howick and Hilton, KZN
- GABBA Collective, Durban, KZN
- Republic Lifestyle Umbrellas, Durban, KZN
- Zero2Five Trust, South Africa



HOW TO HELP

The truth is, we can't keep doing this without the support of our donors. We're so grateful for the difference you make in these children's and families' lives. All donations and assistance, no matter how small are greatly appreciated. Thank you.

We are a registered Non-Profit, Public Benefit Organisation

- Public Benefit Organisation 930004928
- Non-Profit Organisation NPO 020-084

BANK DETAILS

Angels' Care Centre

First National Bank: Business Cheque

Howick Branch: 220725

Account: 620 357 154 18

Swift code: FIRZAJJ

PAYFAST and ZAPPER are additional donation options available on our website.

WEBSITE

www.angelscare.co.za

FOLLOW US ON SOCIAL MEDIA

FACEBOOK - [Angels' Care Centre](#)

INSTAGRAM - [angels_care_centre](#)

BOARD OF DIRECTORS

- **Carolyn Hancock**, Chairperson
- **Bronwyn Blades**, Deputy Chairperson
- **Erin Snyman**, Treasurer
- **Natalie Holzbach**, Former Treasurer
- **Hugh Queener**, CUSP Representative
- **Ani Missirian-Wilson**, BUMC Representative
- **Dave Cato**, Principal
- **Georgina Purdon**, Head of Marketing
- **Andrew Blades**
- **Wendy Francis**
- **Jo James**
- **Lindsay Bam**
- **Paul Rowney**
- **Savannah Rattray**
- **Rose Frost**, Secretary